

# Having an MRI Scan



An Easy Read guide for having an MRI Scan



# On the day of your appointment



**Your MRI Scan is in the X-ray Department (Medical Imaging)**

Look for the map outside the main entrance.



Clean your hands.



**The X-Ray Department is in the yellow zone.**

Follow the signs.



**This is the entrance.**

This is where you go for your MRI scan.



Give your form to the person at the reception desk.

**Information about ME to help YOU**  
For People with Learning Disabilities and other vulnerable adults/children coming into Mid Cheshire NHS Hospitals

Name:

Welcome to Leighton Hospital

This information belongs to me. Please share my information with other health professionals involved in my care. Please return it to me when I am discharged.

Nursing and medical staff, please look at my information before any interventions take place.

- Things you need to know about me
- Things which are important to me
- My likes and dislikes

If you have a hospital passport, give it to the person at the desk.



**The person doing your MRI scan is called a Radiographer.**

They will explain what will happen to you when you have your scan.



**They will ask you to complete a questionnaire, when you are in the waiting room.**

If you have a carer, they can help you to answer any questions that you need help with.



There are disabled toilets if you need to use them.



**You will be shown to a cubicle.**

You may be asked to wear a gown when you have your scan.





You will need to take off any jewellery, including your watch.



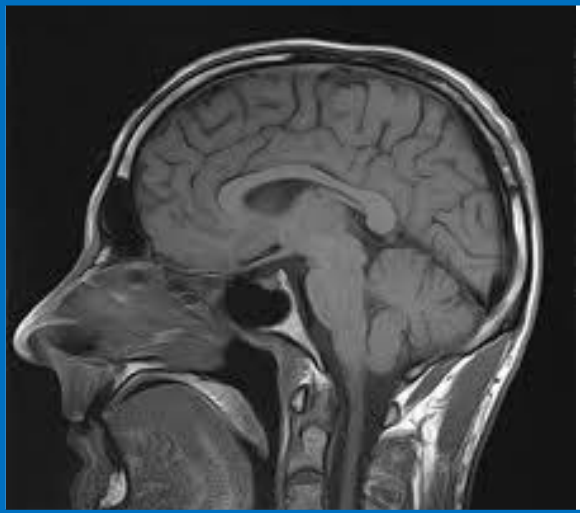
**You will need to empty your pockets if you are carrying anything metal such as coins.**

The MRI scan machine does not like metal objects and could break.



**This is what the MRI Scanner looks like.**

MRI stands for Magnetic Resonance Imaging which uses a magnet, radio waves and a computer.



**It looks inside you to see clear pictures of what is going on inside most parts of your body.**

It helps to make sure you get any treatment that you might need much more quickly.



**They will help you to get onto the bed if you need it.**

Your carer can help you if needed.



**The Radiographer will help you to get into the right position for your scan.**

If you are worried let them know.



**You must try not to move during your scan because this makes the pictures clearer.**

They may put a strap across you to help to keep you still.

The strap will not hurt you.



**They will put something called a head coil over your head.**

The head coil takes the pictures.



You can take your favourite CD to listen to while you have your scan.



**The scanner is very noisy.**

They will play the CD you have brought in.



You may have to wear headphones.



**They will leave the room but they can see you through a window.**

They can hear you and will be able to speak to you through a microphone.





**It will feel like you are going into a tunnel.**

The scanner will not hurt you.

The scan can last from 20 – 40 minutes depending on the number of pictures they need.



**Your carer will be asked to wait outside the scan room.**

Do not worry because they will not be far away should you need them.

If you are really worried your carer can stay with you in the room when you have your scan.



**The Radiographer will tell you when your scan is finished.**

They will tell you how and when you will get your results.



You can get dressed.



You can now go home.



### **Remember**

Talk to staff if you are **worried**.

Talk to the staff if you want to **ask questions**.

The staff want to **help you**.



**Another useful 'Easy Read' booklet**

**Getting ready for my visit to hospital**

Useful information about an outpatient



# MRI Opening times

Monday to Friday

Monday	Tuesday	Wednesday	Thursday	Friday
✓	✓	✓	✓	✓



8.00am to 9.00pm

Saturday and Sunday

Saturday	Sunday
✓	✓



8.00am to 5.00pm



MRI telephone number 01270 278200